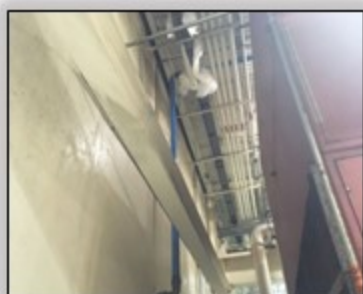
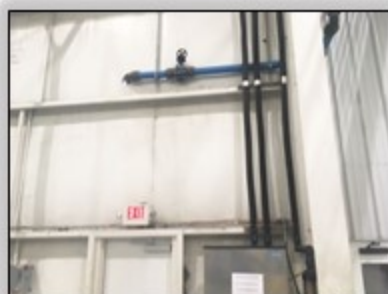


KW PLASTICS

KW Plastics is considered the world's largest reprocessor for HDPE and PP resins, products for the personal care, automotive, agriculture, construction, pipe, paint & coatings, recreation, and flexible packaging/sheet applications industries.



QUALITY PROCESSING

At KW Plastics, we process waste plastic (HDPE, PP) into plastic resin. Our state-of-the-art facility has been built from the ground up to ensure the highest quality and consistency in our products. Our state-of-the-art facility has been built from the ground up to ensure the highest quality and consistency in our products. Our state-of-the-art facility has been built from the ground up to ensure the highest quality and consistency in our products.

PLASTICS RECYCLING EXPERTS
INDUSTRY LEADERS

PLASTIC SCRAP WE BUY

RESINS WE SELL

KW BLOG

Selection Criteria:

Higher Quality

Cost & Energy Savings

Easy Installation



Advancing Compressed Air & Gas Systems

